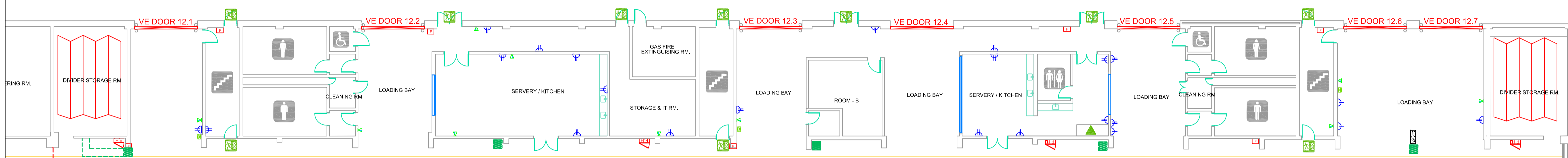
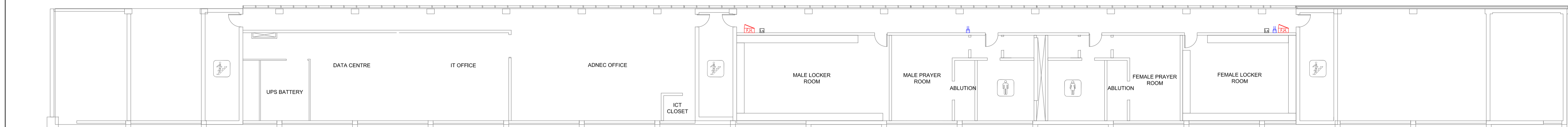
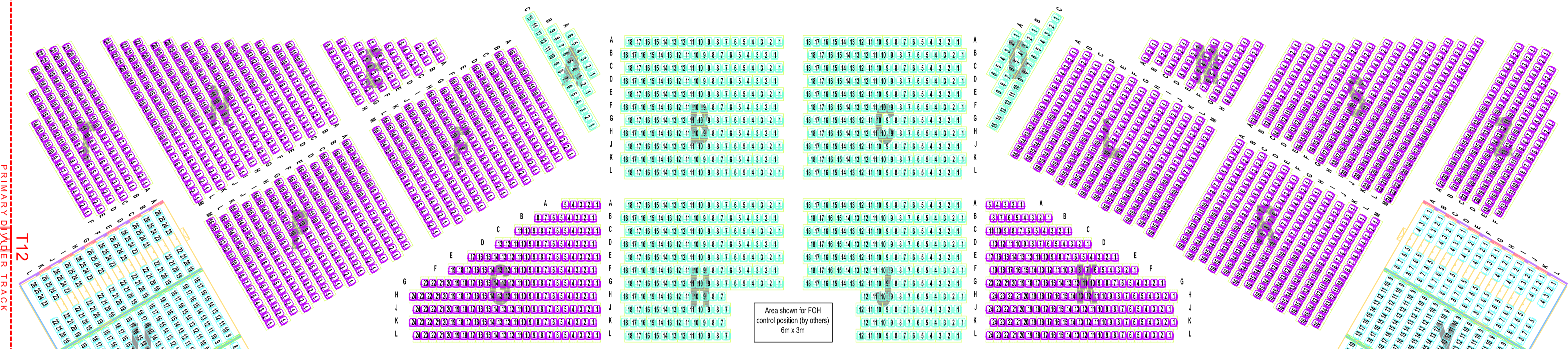


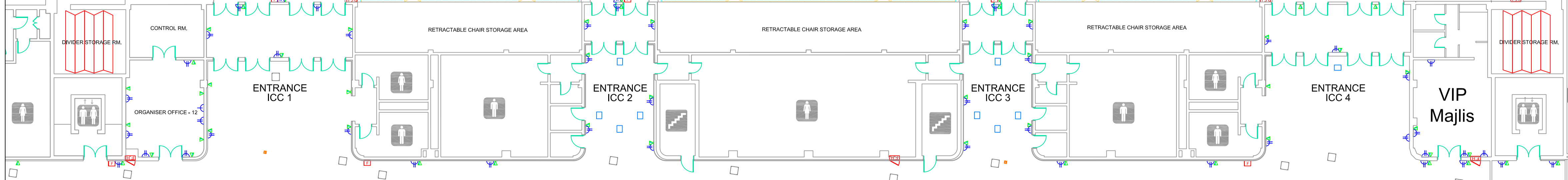
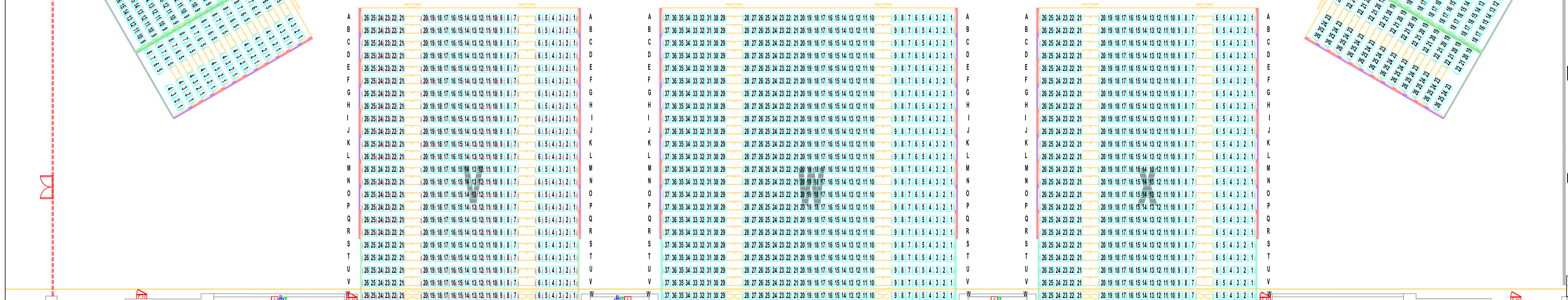
First Floor Level



Area Shown for Stage
(supplied by others)
24m x 12m



Area shown for FOH
control position (by others)
6m x 3m



Total seats 5475

- comprising:-
- Flat floor VIP style seats - 804
 - Flat floor GP style seats - 2000
 - Tiered tribune seating - 2671
- Stage size - Area shown**
24m x 12m (supplied by others)
- Block A ~ 30 ~ Flat Floor VIP
 - Block B ~ 198 ~ Flat Floor VIP
 - Block C ~ 198 ~ Flat Floor VIP
 - Block D ~ 30 ~ Flat Floor VIP
 - Block E ~ 48 ~ Flat Floor GP
 - Block F ~ 208 ~ Flat Floor GP
 - Block G ~ 192 ~ Flat Floor GP
 - Block H ~ 174 ~ Flat Floor VIP
 - Block J ~ 174 ~ Flat Floor VIP
 - Block K ~ 192 ~ Flat Floor GP
 - Block L ~ 208 ~ Flat Floor GP
 - Block M ~ 48 ~ Flat Floor GP
 - Block N ~ 228 ~ Flat Floor GP
 - Block P ~ 208 ~ Flat Floor GP
 - Block R ~ 208 ~ Flat Floor GP
 - Block S ~ 228 ~ Flat Floor GP
 - Block T ~ 116 ~ Flat Floor GP
 - Block U ~ 312 ~ Tribune
 - Block V ~ 598 ~ Tribune
 - Block W ~ 851 ~ Tribune
 - Block X ~ 598 ~ Tribune
 - Block Y ~ 312 ~ Tribune
 - Block Z ~ 116 ~ Flat Floor GP

Drawing Title
ADNEC ICC Seating Standard Layout 8 (5475 seats)

Drawn by: **Chris Lopez**

Date Created: **14 May 2012** Scale: **1:200 @ A1** Revision #: **1**

Approved by: **Adrian Finn**

Drawing Issue to:

Drawing Issue Date:



شركة أبوظبي الوطنية للمعارض
Abu Dhabi National Exhibitions Company

Abu Dhabi National Exhibitions Company
P.O. Box 5546
Abu Dhabi, UAE